

16,000 SF Industrial Building

Interlaken Commerce Center

12345 75th St. Largo, FL 33773



Single Tenant building in the Interlaken Commerce Center with 16,000 square feet of fully sprinkled space suitable for manufacturing, warehousing, or distribution.

Interlaken is located in central Pinellas County off Belcher Road, a major north-south artery. This location in the active Bryan Dairy Road commercial / industrial area provides easy access throughout Pinellas County as well as quick access to the interstate system.

DETAILS



- Excellent mid Pinellas location near Belcher and Bryan Dairy Roads
- 16,000 sf Single tenant standalone building
- In attractive Interlaken Commerce Center
- 10,000 sf warehouse section
- 3,500 sf A/C assembly or A/C warehouse
- 2,500 sf office section
- Heavy 3 phase electric power in place
- Side & rear loading for efficient flow
- Oversized loading doors
- Ample parking and outside storage
- Dock high and grade level loading
- Building is fully sprinkled
- Zoned Light Industrial

Please contact:

John Workman
727.461.5666

jworkman@workmanproperties.com

Workman Properties

505 Howard Court Suite 100
Clearwater, Florida 33756

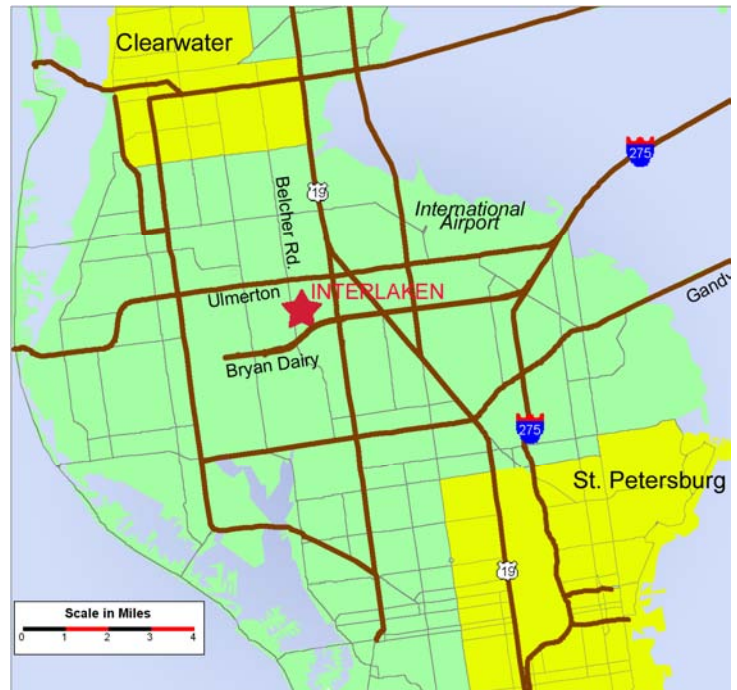
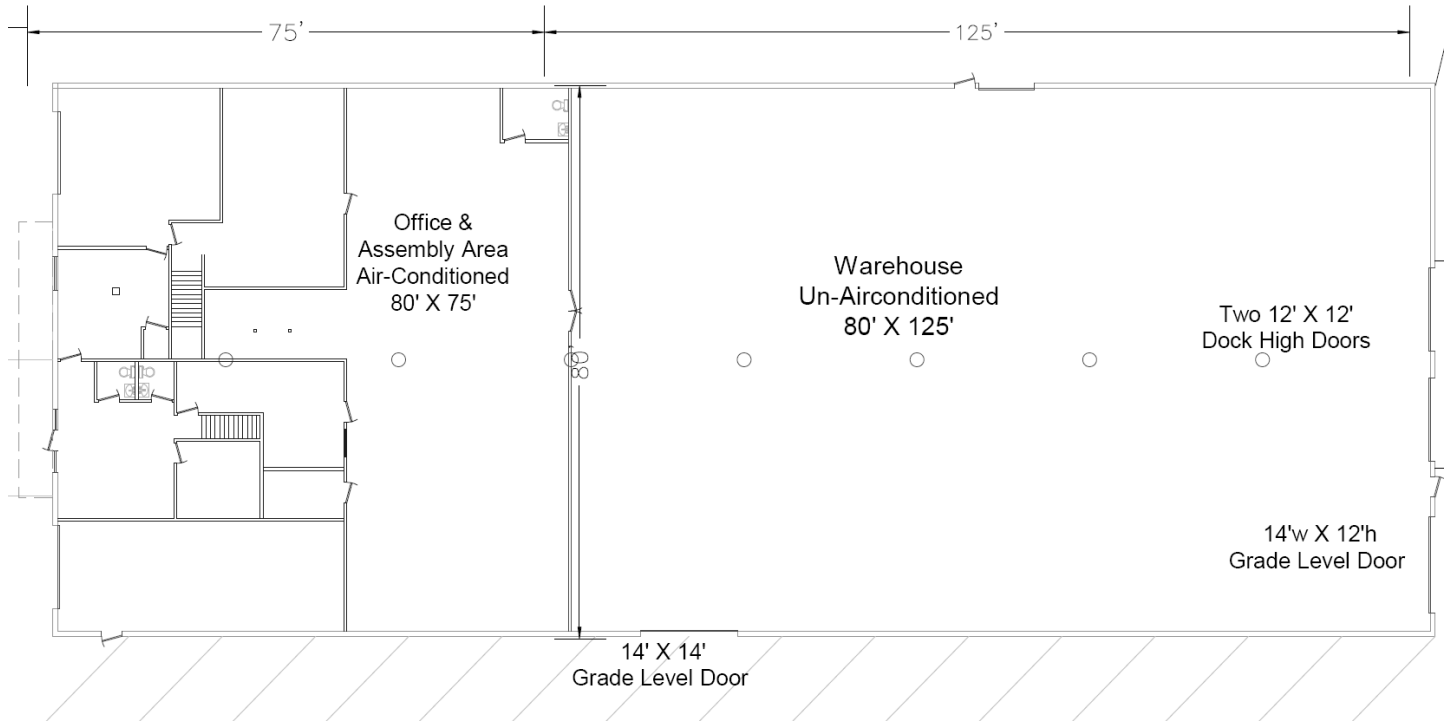
WORKMAN
Properties, inc.
**INDUSTRIAL
PROPERTIES**

WWW.WORKMANPROPERTIES.COM

16,000 SF Industrial Building

Interlaken Commerce Center

12345 75th St. Largo, FL 33773



Rev. 1.0

Please contact:

John Workman
727.461.5666
jworkman@workmanproperties.com

Workman Properties
 505 Howard Court Suite 100
 Clearwater, Florida 33756

WORKMAN
 Properties, inc.
 INDUSTRIAL
 PROPERTIES

WWW.WORKMANPROPERTIES.COM